



QUALITY PRODUCTS

WITH TRUST AND DEDICATION

Captain Floats Takes An Opportunity To Introduce Itself As
A Pioneer Brand With Business Ethics.



LET'S CONNECT

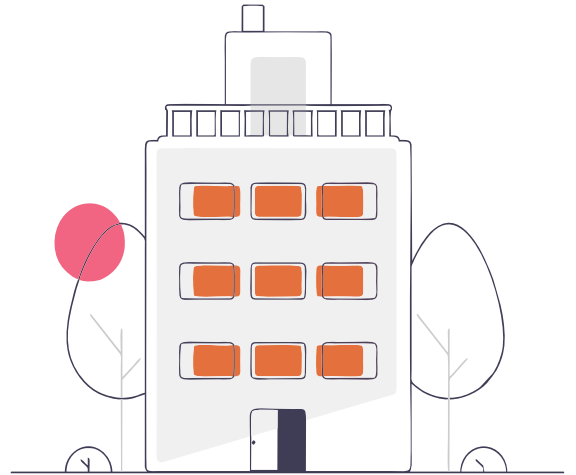
+91 90829 02886 / +91 90826 21147

www.captainfloats.com

WHO ARE WE

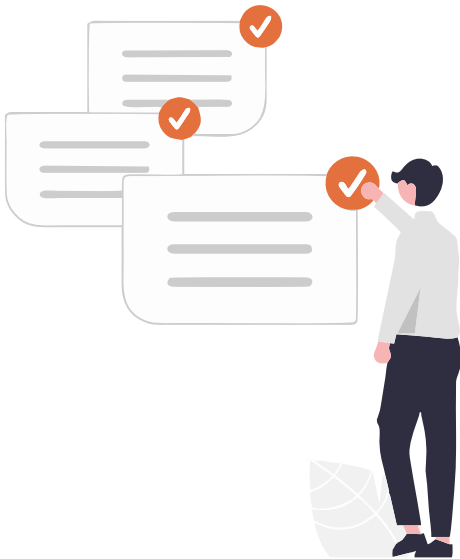
We at Captain Floats, manufacture Stainless-Steel and PP Floats, Distributors of the top class brand in the World Reed Switches, Micro Switches, Flow Sensors, Dairy Fittings, Pressure, and Temperature Gauges, Thermo-electrical Heaters and Equipments, Miniature Switches, Float Level Switches, More.

We transformed ourselves to the nation's call to adopt "Vocal for Local" and "Atmanirbhar" policies. Also, we are a proud company to join the "Magnetic Maharashtra Movement".



OUR USP

We Are Dedicated And Ambitious About What We Do; Thus, We Aim To Serve The Best.



Quality Products

We keep a positive attitude towards our work which tends to provide best quality products at all times.

Best Pricing

We are a cost-effective company, providing quality products at the best price compared to the competition.

On-Time Deliveries

Personally We value Time and we know you do to thus, we promise to deliver on time and with quality you expect.



Affordable Pricing



PAN-INDIA PRESENCE



COMMITTED DELIVERY

WHAT WE OFFER

Captain Floats provides customized solutions to Process Control, Level Indicator, and Level Switch Manufacturing Industry. Indirectly our services are extended in all kinds of Food processing, Engineering, Textiles, Chemicals, Sugar factories, and various other industries, Our expertise in the Indication of Level and Process control is required.

OUR PRODUCTS RANGE

FLOATS AND FLAPPERS

We provide a large assortment of high-quality pressure gauges for use in many different applications. We take great satisfaction in offering the greatest products, aggressive pricing, and top-notch customer service to our clients.

PRESSURE GAUGE

We provide a wide selection of premium pressure gauges for usage in a variety of applications. We take great pride in providing our customers with the best goods, competitive prices, and first-rate customer service.

FLOATS LEVEL SWITCHES

We offer Float Switches that are used often in the level control and alarm of machinery, electrics, chemicals, home appliances, etc. because it is inexpensive, dependable, flexible to install, and available in a variety of materials.

REED AND MINIATURE SWITCHES

We Offer Reed switches that are extremely versatile switches that can be used in a wide range Of applications. They are typically constructed of two ferromagnetic materials and are activated by an external magnetic field. Different types of reed switches can be used depending on the application.

THERMOELECTRICAL HEATERS

We provide Thermoelectric Heater is a type of heating device that utilizes the Peltier effect, a phenomenon where an electrical current flowing through two dissimilar materials creates a temperature difference across the junction of the materials.

FLOATS AND FLAPPERS

We provide a large assortment of high-quality pressure gauges for use in many different applications. We take great satisfaction in offering the greatest products, aggressive pricing, and top-notch customer service to our clients.

At our business, we recognise the value of precision and dependability when it comes to Float and Flapper. That's why we only manufacture the best in the industry.



RANGE OF PRODUCTS



STAINLESS STEEL DISH FLOAT
Float & Board Type Level Indicator

We provide high-quality Stainless Steel Dish Float (Thali Float), the perfect solution for your float and board type level indicator needs. Our Stainless Steel Dish floats in guided product range provides enhanced stability and accuracy, while Captain Float's Stainless Steel Dish Float in non-guided product range offer versatility and cost-effectiveness.

SPECIFICATIONS

Product Dimension: Dia 285mm X 75mm HT

MOC: SS 316L (No MOQ) / SS304 (MOQ – 100 Nos)

Weight: As per requirement.



MLI - 2200
Magnetic – Capsule

We provide the best stainless steel floats for side-mounted magnetic level indicators. These high-quality floats are ideal for dependable, accurate level readings and are reasonably priced. With minimum delivery time, you won't have to wait long to get your new floats.

SPECIFICATIONS

Product Dimension: Dia 48/50mm X 200mm Long

MOC: SS 316L

Magnet Used: FERRITE

RANGE OF PRODUCTS



MLI - 2200 (I)
Magnetic - Capsule

We provide the best stainless steel floats for side-mounted magnetic level indicators. These high-quality floats are ideal for dependable, accurate level readings and are reasonably priced. With minimum delivery time, you won't have to wait long to get your new floats.

SPECIFICATIONS

Product Dimension: Dia 70/72mm X 300mm Long

MOC: SS 316L

Magnet Used: FERRITE



MLI - 2200 (R)
Single Pole Magnetic - Flapper Type

We provide the best stainless steel floats for side-mounted magnetic level indicators. These high-quality floats are ideal for dependable, accurate level readings and are reasonably priced. With minimum delivery time, you won't have to wait long to get your new floats.

SPECIFICATIONS

Product Dimension: Dia 82/85mm X 275mm Long

MOC: SS 316L

Magnet Used: FERRITE



MLI - 2200 (S)
Magnetic - Capsule

We provide the best stainless steel floats for side-mounted magnetic level indicators. These high-quality floats are ideal for dependable, accurate level readings and are reasonably priced. With minimum delivery time, you won't have to wait long to get your new floats.

SPECIFICATIONS

Product Dimension: Dia 48/50mm X 200mm Long

MOC: SS 316L

Magnet Used: FERRITE

RANGE OF PRODUCTS



MLIT - 1100

Magnetic - Capsule

These high-quality floats are ideal for dependable, accurate level readings and are reasonably priced. These stainless steel floats for Top-mounted level indicators (MLIT1100 – 72×300) are ideal for a wide range of industrial applications and provide superior performance in high temperatures and pressures.

SPECIFICATIONS

Product Dimension: Dia 70/72mm X 300mm Long

Fitting: M6

MOC: SS 316L



DLS Floats

Single Pole Magnetic - Flapper Type

We provide the best stainless steel floats for side-mounted magnetic level indicators. These high-quality floats are ideal for dependable, accurate level readings and are reasonably priced. With minimum delivery time, you won't have to wait long to get your new floats.

SPECIFICATIONS

Product: Float For Dis-Placer Level Switch

Product Dimension: Dia 60mm X 265mm Long – ID 5MM



LS 9900

Magnetic - Capsule

These high-quality floats are ideal for dependable, accurate level readings and are reasonably priced. LS 9900 are ideal for a wide range of industrial applications and provide superior performance in high temperatures and pressures. With our floats, you can be confident that you are getting high-quality at an affordable price.

SPECIFICATIONS

Product Dimension: Dia 45/48mm X 145mm Long (Including Fitting)

Fitting: M6

RANGE OF PRODUCTS



LLS - 24

Magnetic - Cylindrical

SPECIFICATIONS

Model Name: LLS - 24

Product Name: FLOAT FOR TOP MOUNTED MAGNETIC LEVEL SWITCH
(MAGNETIC - CYLINDRICAL)

Product Dimension: Dia 24mm X 24mm Long - ID 9.5MM



LLS - 28

Magnetic - Cylindrical

SPECIFICATIONS

Model Name: LLS - 28

Product Name: FLOAT FOR TOP MOUNTED MAGNETIC LEVEL SWITCH
(MAGNETIC - CYLINDRICAL)

Product Dimension: Dia 28mm X 28mm Long - ID 9.5MM



LLS - 40

Magnetic - Cylindrical

SPECIFICATIONS

Model Name: LLS - 40

Product Name: FLOAT FOR TOP MOUNTED MAGNETIC LEVEL SWITCH
(MAGNETIC - CYLINDRICAL)

Product Dimension: Dia 40mm X 50mm Long - ID 15.5MM

RANGE OF PRODUCTS



BALL FLOATS

Ball Float

SPECIFICATIONS

Size: 2", 3", 4", 6", 8", 12" (as per requirement)

MOC: 316 & 304 (as per requirement)

Test Pressure: (as per requirement)

End Connection: (as per requirement)



BALL FLOATS WITH PIPE FITTING

Ball Float

SPECIFICATIONS

Product: Long Welded to Ball and Closed Another End.

Product Dimensions: Dia 12mm Pipe x 75mm

MOC: 304

Ball Weight: 120GMS



SS GUIDE ROD CAPSULE FLOAT

Ball Float

SPECIFICATIONS

Ball Floats MOC: 304

Dimension: Dia 44 x 62 HT

End Connection: Stopper with End Cap

RANGE OF PRODUCTS



SS / ALUMINUM FLAPPERS

Floats and Flappers

SPECIFICATIONS

Product Dimensions: Depends on requirement (MOQ 1Mtr)

MOC Body: Stainless steel / Aluminum

MOC Flapper: Stainless steel / Aluminum

Visible Area: Acrylic frame

End cap: Aluminum

Note: Full Stainless steel product available (Body + Flapper)



TITANIUM FLOATS

Floats and Flappers

SPECIFICATIONS

Model Name: TICF

Name: Titanium Floats

Product Dimensions: Dia 50-51 x 320mm Long

MOC: Titanium

Pressure: As required

Temperature: As required

WANT TO ORDER?

Feel Free To Connect With Us!

PRESSURE GAUGE

We provide a large assortment of high-quality pressure gauges for use in many different applications. We take great satisfaction in offering the greatest products, aggressive pricing, and top-notch customer service to our clients.

At our business, we recognise the value of precision and dependability when it comes to measuring pressure. Because of this, we only sell gauges from reputable suppliers that have a solid reputation for reliability and dependability.



RANGE OF PRODUCTS



UTILITY COMMERCIAL GAUGE

Product Code: FM

SPECIFICATIONS:

These gauges are used where fluid medium does not clog connection port or corrode copper alloy for general industrial applications such as compressors, pumps, boilers, hydraulic & pneumatic equipment, healthcare industry.

APPLICATIONS:

Stainless Steel Gauges are suitable for Chemical, Pharmaceutical, Petrochemical, Oil & Gas, Refinery, Paper & Pulp, Sugar Breweries, Cement Industries etc.



MASTER PRESSURE GAUGE

Product Code: FM

SPECIFICATIONS:

These gauges are used in laboratories and industries by inspecting authorities, for pressure gauge testing and calibration.

APPLICATIONS:

Master Pressure Gauges are suitable for Chemical, Pharmaceutical, Petrochemical, Power Plant, Refinery, Paper & Pulp, Sugar, Breweries, Cement Industries, etc.

RANGE OF PRODUCTS



SS CAST ALUMINUM GAUGE

Product Code: FM

SPECIFICATIONS:

These pressure gauges are designed for outdoor field applications, which are used for fertilizers, chemical plants, Thermal generation plants, etc.

APPLICATIONS:

These pressure gauges are designed for outdoor field. Applications, which is used for fertilizers, Chemical plants, Thermal generation plants and more.



BRASS CAST ALUMINUM GAUGE

Product Code: FM

SPECIFICATIONS:

These gauges are used in Laboratories and Industries by Inspecting authorities, for pressure gauge testing and Calibration.

APPLICATIONS:

These pressure gauges are designed for outdoor fields. Applications, which are used for fertilizers, Chemical plants, Thermal generation plants, and more.



WELDING PRESSURE GAUGE

Product Code: FM

SPECIFICATIONS:

These gauges are used where the fluid medium does not clog the connection port or corrode copper alloy for welding, cutting & related applications.

APPLICATIONS:

These type of pressure gauges are suitable for Chemical, Pharmaceutical, Petrochemical, Oil & Gas, Refinery, Paper & Pulp, Sugar Breweries, Cement Industries etc.

RANGE OF PRODUCTS



ELECTRIC CONTACT GAUGE

Product Code: FM

SPECIFICATIONS:

These gauges are used where the fluid medium does not clog the connection port or corrode copper alloy for welding, cutting & related applications.

APPLICATIONS:

These pressure gauges are suitable for Chemical, Pharmaceutical, Petrochemical, Oil & Gas, Refinery, Paper & Pulp, Sugar Breweries, Cement Industries, etc.



HOMOGENIZER PRESSURE GAUGE

Product Code: FM

SPECIFICATIONS:

These pressure gauges are designed for outdoor field applications which are used for fertilizers, chemical plants, Thermal generation plants, etc.

APPLICATIONS:

Homogenizer Gauges are used in Food, Beverages, Dairy Industries, etc.



TRICLOVER PRESSURE GAUGE

Product Code: FM

SPECIFICATIONS:

These Temperature gauges are used in Engineering Plant, Machinery. Plant & Apparatus, Piping, Pressure Vessels, and Industrial Heating.

APPLICATIONS:

Triclover Gauges are used in Food & Beverages, Dairy, Pharmaceutical, Water Treatment Plant, etc.

RANGE OF PRODUCTS



DIAPHRAGM TYPE GAUGE

Product Code: FM

SPECIFICATIONS:

These gauges are traditionally used when a standard measuring instrument should not be exposed to the process pressure directly, like viscous, corrosive gases and liquid media in a corrosive environment.

APPLICATIONS:

Suitable for Chemical, Pharmaceutical, Petrochemical, Oil & Gas, Refinery, Paper & Pulp, Sugar, Breweries, Food & Beverages.



DIAPHRAGM SEALED GAUGE

Product Code: FM

SPECIFICATIONS:

These gauges are traditionally used when a standard measuring instrument should not be exposed to the process pressure directly, like viscous, corrosive gases and liquid media in a corrosive environment.

APPLICATIONS:

Sealed Diaphragm Gauges are suitable for Chemical, Pharmaceutical, Petrochemical, Oil & Gas, Refinery, Paper & Pulp, Sugar, Breweries, Food & Beverages.



CAPSULE PRESSURE GAUGE

Product Code: FM

SPECIFICATIONS:

These gauges are suitable for dry and gaseous media. Capsule gauges are widely used for the measurement of low-pressure gaseous pressure.

APPLICATIONS:

For low pressure measurement of Gaseous Media Application like Burner Monitoring, Gas Production Medical Application.

RANGE OF PRODUCTS



DIFFERENTIAL PRESSURE GAUGE

Product Code: FM

SPECIFICATIONS:

For gases and Liquid media, filter control system, and differential flow measurement. Differential Gauges are used to measure the pressure difference between two different ports and indicate the pressure difference on the dial.

APPLICATIONS:

Differential Gauges can be used for measurement of tank level, detection of filter clogging, and measurement of flow.



VACUUM PRESSURE GAUGE

Product Code: FM

SPECIFICATIONS:

This vacuum gauge has heavy-duty sensing elements and a stainless steel case for protection in harsh environments. A gauge like this offers greater accuracy than a general-purpose gauge and is typically used in more demanding applications.

APPLICATIONS:

Suitable for Chemical, Pharmaceutical, Petro chemical, Oil & Gas, Refinery, Paper & Pulp, Sugar Breweries, Cement Industries etc.



LIQUID FILLED PRESSURE GAUGE

Product Code: FM

SPECIFICATIONS:

These gauges are used where pressure gauges are subjected to severe conditions where pulsation or vibration exists. The filled liquid protects the internal parts against vibrations. Intended to use for gaseous or liquid media that will not obstruct the pressure system.

APPLICATIONS:

Suitable for Chemical, Pharmaceutical, Petrochemical, Oil & Gas, Refinery, Paper & Pulp, Sugar Breweries, Cement Industries etc.

RANGE OF PRODUCTS



THERMOCOUPLE

Product Code: FM

SPECIFICATIONS:

Mineral Insulated Thermocouple Assemblies that we provide have great insulation resistance, are compact, flexible enough to route, have high heat conductivity, and are mineral insulated. Each assembly has 2, 4, or 6 Thermocouple wires. Mineral Insulated Thermocouple Assemblies have a solid mechanical performance and are well-built.

APPLICATIONS:

Suitable for Chemical, Pharmaceutical, Petrochemical, Power Plant, Refinery, Paper & Pulp, Sugar, Breweries, Cement Industries,



RTD

Product Code: FM

SPECIFICATIONS:

These RTDs can be ordered with in-head signal conditioners or temperature transmitters, which convert the RTD signal into a reliable linear, noise-immune signal that is powered by a 4 mA to 20 mA DC current loop that is industrial standard. The temperature transmitters enable output calibration to the appropriate measured temperature range by applying external Zero and span parameters.

APPLICATIONS:

For Chemical, Pharmaceutical, Petrochemical, Power Plant, Refinery, Paper & Pulp, Sugar, Breweries, Cement Industries, etc.

WANT TO ORDER?

Feel Free To Connect With Us!

FLOAT LEVEL SWITCH

GENERAL OVERVIEW:

When needed, encapsulate one or more magnetic switch points in non-magnetic metal or plastic. The magnetic switch that opens and closes to operate and regulate the liquid level is drawn to a hollow float ball by a permanent magnet. Without injecting any liquid, the condition is N.O. and N.C. The float switch is used often in the level control and alarm of machinery, electrics, chemicals, home appliances, etc. because it is inexpensive, dependable, flexible to install, and available in a variety of materials.

PRODUCT APPLICATIONS:

Widely used in household appliance, anti-theft system of windows and doors, running machine, bicycle and car counters as well as the car door induction system, coffee machine, humidifier, computer, scanner etc.

RANGE OF PRODUCTS



FACTORY SALE 304 SS FLOAT LEVEL SWITCH SENSOR

Product Name: Float Switch Sensor

Material: Stainless Steel 304/316

Rod Length: 220MM

Cable Length: as per your requirements

Terminal / Connector: As per your requirements.

Function: Float level switches are widely used in electronic, electrical, chemical, water treatment, drainage and other industry of level control and alarm.

OEM: Accepted

Package: Standard Export Package



MULTI-POINTS STAINLESS STEEL FLOAT LEVEL SWITCH SENSOR

Product Name: Float Switch Sensor

Material: Stainless Steel 304/316

Rod Length: 220MM

Cable Length: as per your requirements

Terminal / Connector: As per your requirements.

Function: Float level switches are widely used in electronic, electrical, chemical, water treatment, drainage and other industry of level control and alarm.

OEM: Accepted

Package: Standard Export Package

RANGE OF PRODUCTS



**PP FLOAT SWITCH SENSOR
LIQUID LEVEL CONTROLLER**

Product Name: Float Switch Sensor

Material: PP

Rod Length: 220MM

Cable Length: as per your requirements

Terminal / Connector: As per your requirements.

Function: Float level switches are widely used in electronic, electrical, chemical, water treatment, drainage and other industry of level control and alarm.

OEM: Accepted

Package: Standard Export Package



**FACTORY DIRECT SALE FLOAT
LEVEL SWITCH SENSOR**

Product Name: Float Switch Sensor

Material: PP

Rod Length: 220MM

Cable Length: as per your requirements

Terminal / Connector: As per your requirements.

Function: Float level switches are widely used in electronic, electrical, chemical, water treatment, drainage and other industry of level control and alarm.

OEM: Accepted

Package: Standard Export Package



**SINGLE FLOATING BALL SS
FLOAT LEVEL SWITCH**

Product Name: Float Switch Sensor

Material: Stainless Steel 304/316

Rod Length: 220MM

Cable Length: as per your requirements

Terminal / Connector: As per your requirements.

Function: Float level switches are widely used in electronic, electrical, chemical, water treatment, drainage and other industry of level control and alarm.

OEM: Accepted

Package: Standard Export Package

RANGE OF PRODUCTS



**DOUBLE FLOATING BALLS
SS FLOAT LEVEL SWITCH**

Product Name: Float Switch Sensor

Material: Stainless Steel 304/316

Rod Length: 220MM

Cable Length: as per your requirements

Terminal / Connector: As per your requirements.

Function: Float level switches are widely used in electronic, electrical, chemical, water treatment, drainage and other industry of level control and alarm.

OEM: Accepted

Package: Standard Export Package



**VERTICAL PLASTIC FLOAT
LEVEL SWITCH SENSOR**

Product Name: Float Switch Sensor

Material: PP

Rod Length: 220MM

Cable Length: as per your requirements

Terminal / Connector: As per your requirements.

Function: Float level switches are widely used in electronic, electrical, chemical, water treatment, drainage and other industry of level control and alarm.

OEM: Accepted

Package: Standard Export Package



**SIDE MOUNTED STAINLESS STEEL
FLOAT LEVEL SWITCH**

Product Name: Float Switch Sensor

Material: Stainless Steel 304/316

Rod Length: 220MM

Cable Length: as per your requirements

Terminal / Connector: As per your requirements.

Function: Float level switches are widely used in electronic, electrical, chemical, water treatment, drainage and other industry of level control and alarm.

OEM: Accepted

Package: Standard Export Package

THERMOELECTRIC HEATERS

A Thermoelectric Heater is a type of heating device that utilizes the Peltier effect, a phenomenon where an electrical current flowing through two dissimilar materials creates a temperature difference across the junction of the materials. We offer a wide selection of high-quality Thermoelectric Heaters and Equipment for a variety of applications. We take pride in providing our customers with the best products, competitive pricing, and exceptional customer service.



RANGE OF PRODUCTS



SILICON FLEXIBLE HEATERS

Thermoelectric Heater

SPECIFICATIONS

As with any electrically heated product, the proper application of heater and temperature control is the most important factor in optimum performance and efficiency.

FEATURES

- Offered in different sizes and specifications.
- Duly quality checked prior to dispatch.
- Timely delivered at client's end.



PLUG HEATERS

Thermoelectric Heater

SPECIFICATIONS

Screw plug immersion heaters offer heating options for a wide range of thermal heating applications, including fluid freeze protection and winterization, hot or warm water storage, component cleaning, plating and finishing chemicals, waste oil, wash systems, and many more.

FEATURES

- Cleans water and Process water
- Lube and fuel oils
- Hydraulic oil and ethylene glycol

RANGE OF PRODUCTS



ELECTRIC AIR HEATER

Thermoelectric Heater

SPECIFICATIONS

We provide Electric Air Heaters specifically helpful, efficient and even cost-effective. It can be available in different variations as per our customer's requirements and need.

FEATURES

- Offered in different sizes and specifications.
- Duly quality checked prior to dispatch.
- Timely delivered at client's end.



GLASS HEATERS

Thermoelectric Heater

SPECIFICATIONS

Electric Glass Heaters are what we have to offer. As extremely corrosive acids like sulfuric, nitric, and hydrochloric as well as alkalis like sodium nitrate etc. do not react with glass, these heaters are typically employed in chemical tanks.

FEATURES

- Energy-Saver
- Reduced Maintenance
- Efficient performance



CARTRIDGE HEATERS

Thermoelectric Heater

SPECIFICATIONS

We provide custom-made Cartridge Heaters as well as standard models to our customers, whose lengths and diameters change depending on the voltage and wattage.

FEATURES

- Offered in different sizes and specifications.
- Duly quality checked prior to dispatch.
- Timely delivered at client's end.

REED SWITCHES

GENERAL OVERVIEW:

Reed switches are extremely versatile switches that can be used in a wide range of applications. They are typically constructed of two ferromagnetic materials and are activated by an external magnetic field. Different types of reed switches can be used depending on the application.

PRODUCT APPLICATIONS:

Latching reed switches, for example, are ideal for applications where the switch must remain closed or open after the external field is removed. Hermetically sealed reed switches are ideal for applications that require a high level of environmental and disturbance protection, High-Temperature reed switches are frequently used in automotive and other applications requiring high performance in extreme temperatures.

RANGE OF PRODUCTS



OKI REED SWITCH
BRAND : KOFU

SPECIFICATIONS:

Switch Configuration: SPST
Product Weight: LIGHTWEIGHT
Current Rating: 0.7 A
Power / Voltage: 70 W/VA
Usage / Application: Elevator
Output: 6
Glass Diameter: 21 MM

ADDITIONAL INFORMATION

Production Capacity: 10K-50K
Delivery Time: 08- 10 WEEKS
Packaging Details: 1000 BOX



OKI REED SWITCH
BRAND : KOFU

SPECIFICATIONS:

Switch Configuration: SPDT
Product Weight: LIGHT WEIGHT
Current Rating: 10VA
Power/Voltage: 200 DV / 150 AC
Usage/Application: Elevator
Output: 6
Glass Diameter: 14MM

ADDITIONAL INFORMATION

Production Capacity: 10K-50K
Delivery Time: 08- 10 WEEKS
Packaging Details: 2000 BOX

RANGE OF PRODUCTS



COTO REED SWITCH

BRAND : COTO

SPECIFICATIONS:

Switch Configuration: SPST
Product Weight: LIGHTWEIGHT
Current Rating: 0.7 A
Power / Voltage: 70 W/VA
Usage / Application: Elevator
Output: 6
Glass Diameter: 21 MM

ADDITIONAL INFORMATION

Production Capacity: 10K-50K
Delivery Time: 08- 10 WEEKS
Packaging Details: 1000 BOX



COTO REED SWITCH

BRAND : COTO

SPECIFICATIONS:

Switch Configuration: SPDT
Product Weight: LIGHT WEIGHT
Current Rating: 10VA
Power/Voltage: 200 DV / 150 AC
Usage/Application: Elevator
Output: 6
Glass Diameter: 14MM

ADDITIONAL INFORMATION

Production Capacity: 10K-50K
Delivery Time: 08- 10 WEEKS
Packaging Details: 2000 BOX



1523 SPST REED SWITCH

BRAND : [-]

SPECIFICATIONS:

Switch Configuration: SPST
Power/Voltage: 250V AC/DC
Usage/Application: Industrial
Switching Voltage: 250V AC/DC
Switching Capacity: 120 W/VA
Switching Current: 3.0 A Max
Glass Length: 52.0mm
Glass Diameter: 5.4mm

ADDITIONAL INFORMATION

Production Capacity: 10K-50K
Delivery Time: 06- 08 WEEKS
Packaging Details: 1000 BOX

MINIATURE SWITCHES



MICRO SWITCHES

Miniature Switches

SPECIFICATION AND APPLICATION

Micro Switches are used for many different applications within building, automation and security. Some examples of these applications are; Push buttons for alarms and call points – micro switches are used as the buttons within fire alarms, emergency stop controls, emergency door releases.



TACT SWITCHES

Miniature Switches

SPECIFICATION AND APPLICATION

Tact Switches or Tactile Switches are electromechanical devices used to start or stop current flow along a circuit. Devices in this family are often very small and are turned on or off through the use of an actuator that is depressed into the unit's body.



RELAYS

Miniature Switches

SPECIFICATION AND APPLICATION

A relay is an electrically operated switch. It consists of a set of input terminals for a single or multiple control signals, and a set of operating contact terminals. The switch may have any number of contacts in multiple contact forms, such as make contacts, break contacts or combinations thereof.



CONTACT DETAILS



Corporate Office:

53, Shree Manoshi Complex, Plot No. 5 & 6, Sector 3, Opp. Ghansoli Railway station, Ghansoli (E), Navi Mumbai, (MH) 400701, INDIA.



Factory Office:

Unit No. 9, Scientific Complex, Opp.Thakurpada, Mahapa Road, Post Padle, Village, Near Shil Octroi Naka, Thane - 421204, INDIA.



+91 90829 02886
+91 90826 21147



sales@captainfloats.com
captainfloats1@gmail.com



www.captainfloats.com

LET'S CONNECT



Chat With Us
+91 90826 21147

